

PROMOTING SAFETY IN RESIDENTIAL CARE PILOT TRAINING PROGRAM

Enhancing leadership capability and understanding

Data 1



100%

Learning and development co-created in partnership with the residential care Working Group and members of the Lived Experience Advisory Group

- Residential Care Occupational Health and Safety Leaders
- Targeted strategic engagement rural and regional workforces
- Residential Care Learning and Development Strategy Reference Group
- WorkSafe Acci Maps Preventi Maps
- Monash University Research sector survey

Data 2

Multi-level safety leadership approach

189



90 Frontline



59 Supervisor



40 Executive

Data 3

Participant feedback

"I found the training to be good and of huge benefit to frontline workers."

"I thought the training was fantastic. I give praise to the company as I thought their speaker was excellent who spoke very well and explained content quite well."

"Not only did it reinforce the knowledge that I have already learnt over the years both in practice and in theory, but it also gave me more knowledge about keeping myself safe and also my co-workers, both physically and mentally."

"When can we schedule two more sessions to capture our remaining staff?"

Data 4

Frontline workforce included Aboriginal Community Controlled Organisations.

Residential Care Providers across Victoria

- Victorian Aboriginal Child Care Agency
- Berry Street McKillop
- Allambi Care
- Uniting Care Junction Services
- Children and Family services
- Anglicare

8

Statewide



Regional



Metropolitan



Data 5

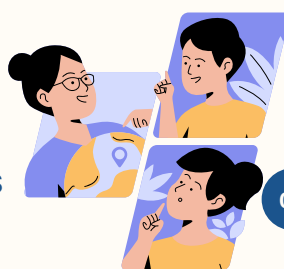
Prevention framework tailored to residential care sector identifying capabilities and strategies to create a psychologically safe workplace and management of occupational violence and aggression.



01 E-LEARN MODULES PRE-EVALUATION



02 TRAINING MODES



04 LEADERSHIP SESSION



03 EVALUATION POST TRAINING THREE YEAR PROGRAM

